



2nd semester Advanced Lesson 8



Topic 8:

Unit 5: Grammar: Uses of **it**.



It can be used to introduce a gerund, infinitive or clause that is the subject of the sentence. It is more natural and less formal than putting the clause or infinitive first.

	More natural than
It was fun going to the cinema with you.	Going to the cinema with you was fun.
It would be stupid to do that.	To do that would be stupid.
It isn't important whose fault it is.	Whose fault it is isn't important.

Of + noun

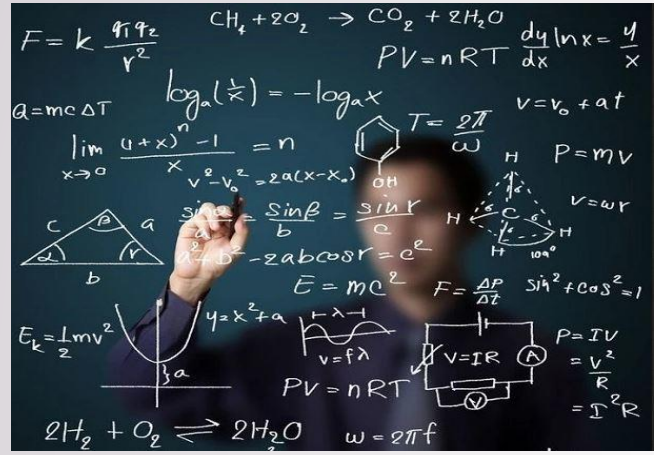
To say who or what the adjective refers to

It is kind of you to give me a birthday present.



It can stand for a clause

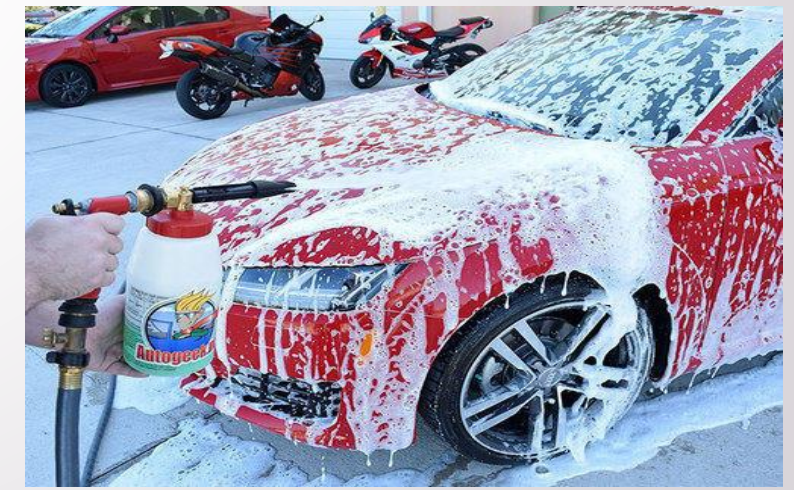
or infinitive that is the object of a sentence



I don't find **it** easy to solve maths equations.

We owe **it** to him to give him the benefit of the doubt.

You can leave **it** to Ted to wash the car.





**It as + noun/adjective + clause or
infinitive with see, take, regard, accept and view.**

I take it as a regard that you weren't involved.

I regard it as a compliment that I was included on the guest list.

Complete the sentences with your own opinion

I find it hard...

It isn't worth...

I hate it when...

I see it as unlikely...

It is always fun...

It's strange...

I'd appreciate it if...

