



ACADEMIC LYCEUM “INTERNATIONAL HOUSE – TASHKENT”

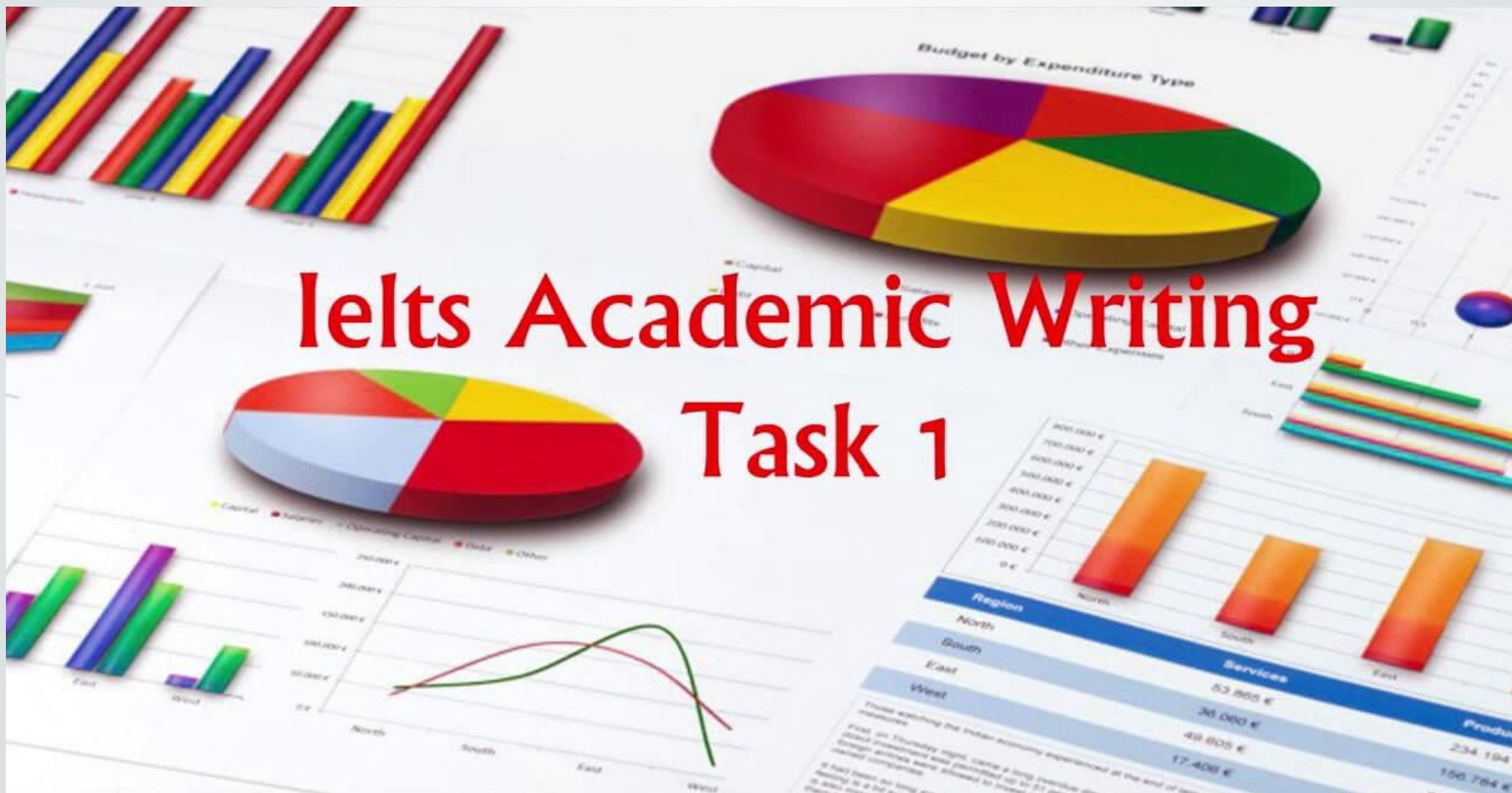
**2nd semester
ENGLISH LANGUAGE**



Topic 36. Solutions. Advanced. Unit 7 Review Intermediate control work № 3

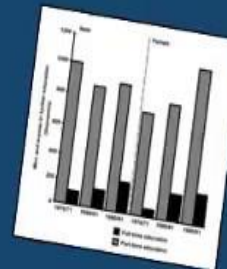


ielts Academic Writing Task 1

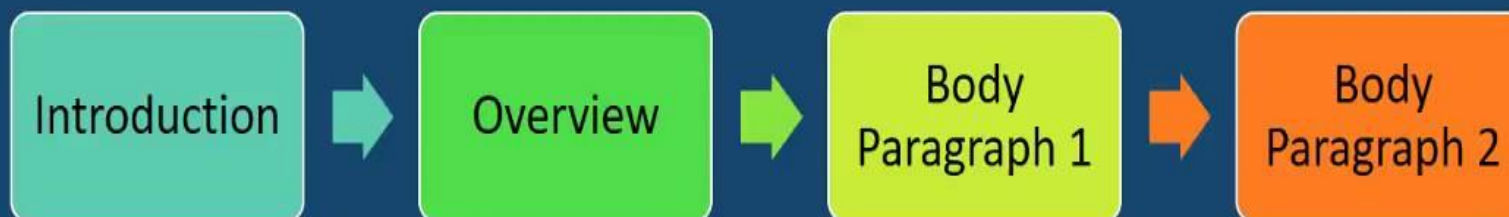


IELTS Writing Task 1

Basics



- What to write and how to structure it -

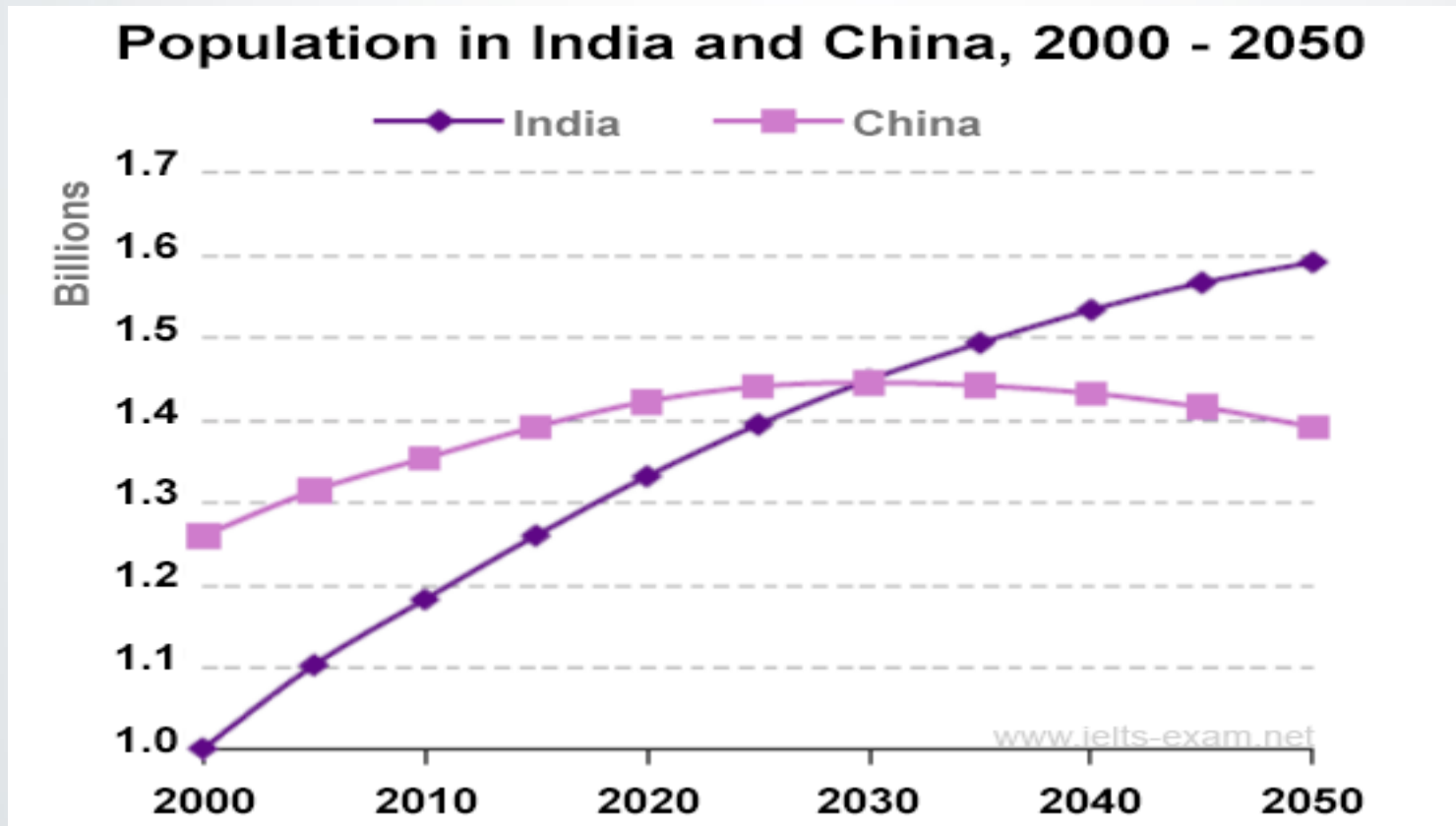




The graph below shows population figures for India and China since the year 2000 and predicted population growth up until 2050.



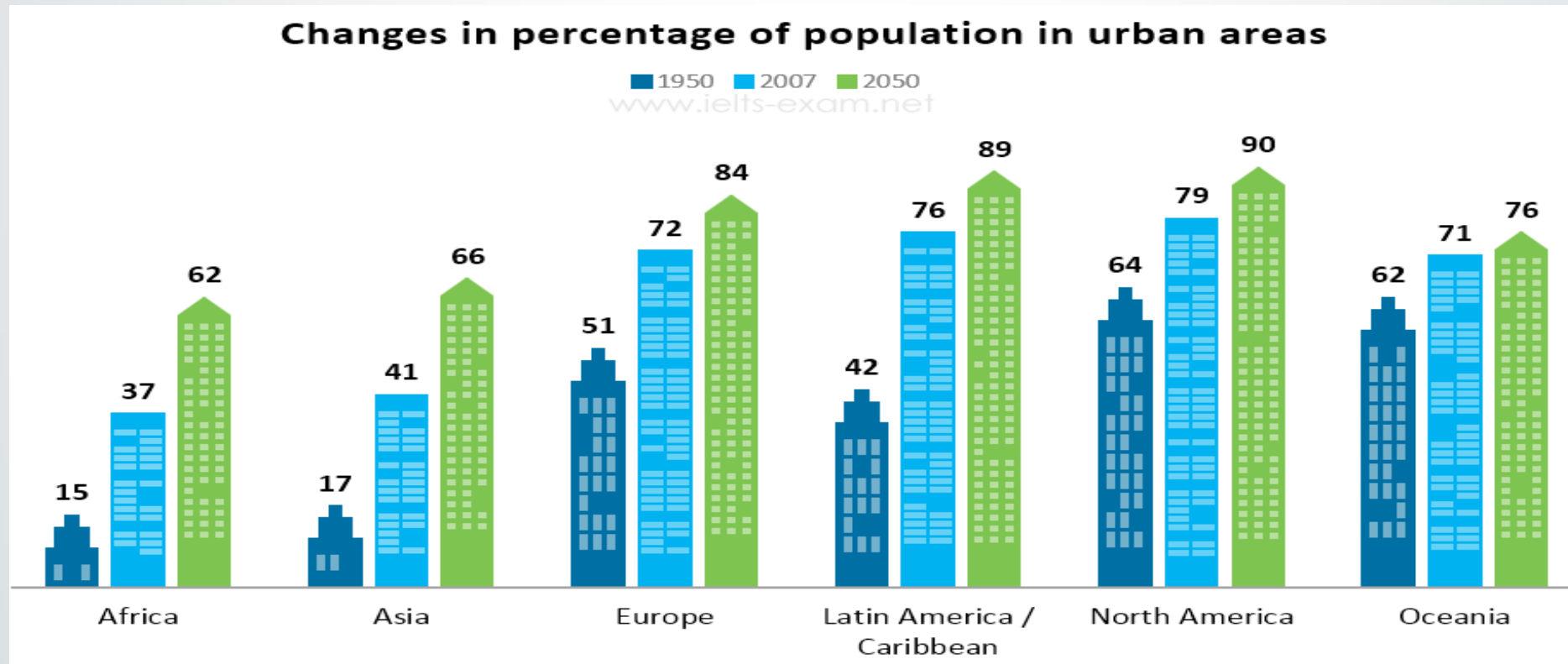
Summarise the information by selecting and reporting the main features, and make comparisons where relevant.





The bar chart below gives information about the percentage of the population living in urban areas in different parts of the world.

Summarise the information by selecting and reporting the main features, and make comparisons where relevant.

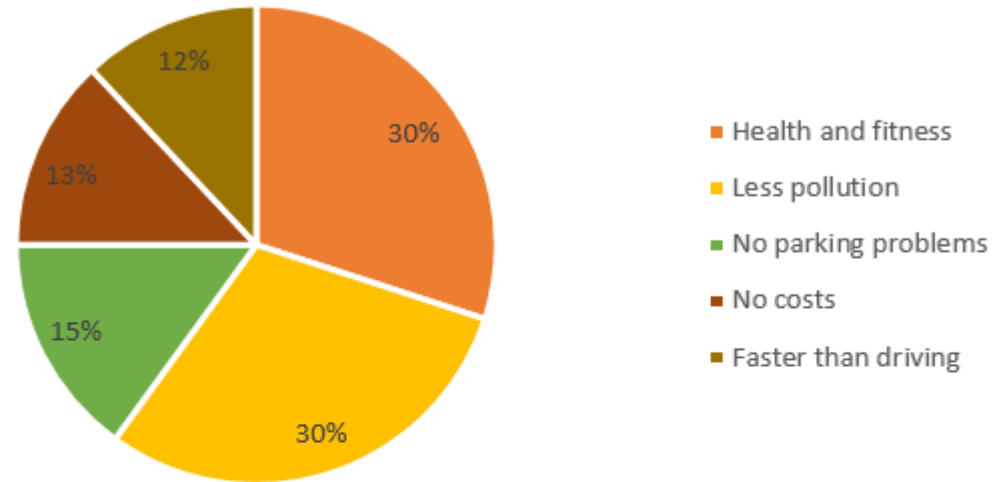




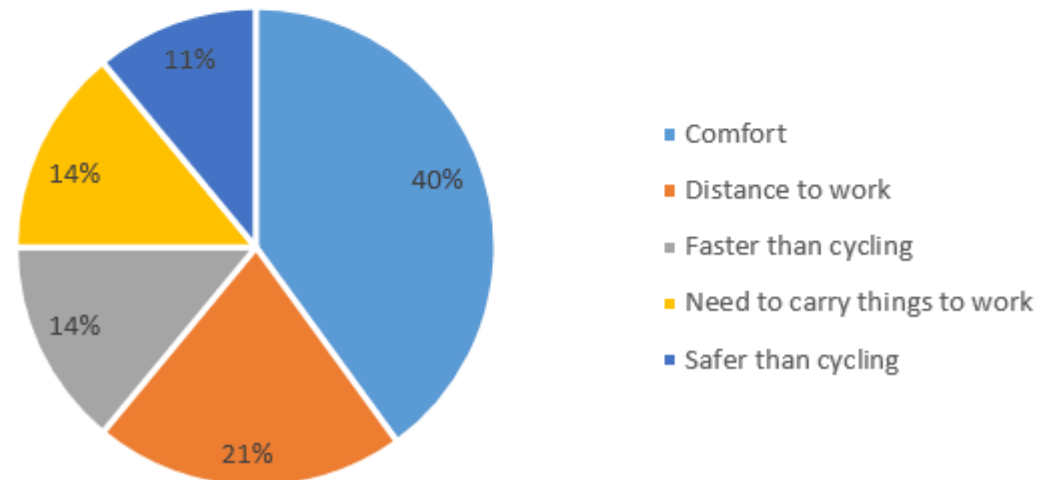
The charts below show the reasons why people travel to work by bicycle or by car.

Summarise the information by selecting and reporting the main features, and make comparisons where relevant.

Reasons for cycling to work



Reasons for driving to work





The table below shows the results of surveys in 2005, 2010 and 2015 about McGill university.

Summarise the information by selecting and reporting the main features, and make comparisons where relevant.

	2005	2010	2015
Teaching quality	74	72	78
Library resources	86	88	87
Student services	54	81	95
Range of modules offered	39	31	25
Sports and social facilities	65	65	65

The diagram below shows how greenhouse gases trap energy from the Sun.

Summarise the information by selecting and reporting the main features, and make comparisons where relevant.

