



# **ACADEMIC LYCEUM “INTERNATIONAL HOUSE – TASHKENT”**

**2<sup>nd</sup> semester**  
**ENGLISH LANGUAGE**



## Topic 41: Pupils book for the 11<sup>th</sup> grade pupils Unit 7 Conversation about library. Destination C1 Unit 24 Vocabulary Relationship and people.

### Collocations with the word **RELATIONSHIP**

VERBS: build, develop, establish, form, have a relationship

ADJECTIVES: a close relationship, a long-standing  
relationship, a working relationship,  
a successful relationship

PREPOSITIONS: a relationship with someone,  
a relationship between two things or people



# Useful vocabulary- Relationships

## Nouns:

- companion
- company
- acquaintance
- buddy (US)
- mate (UK)
- shared interests = similar hobbies
- sibling
- family connection
- extended family
- nuclear family
- conflict
- family reunion



## Verbs:



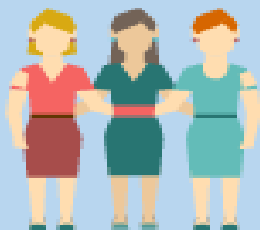
gather

Get To Know





## Relationship idioms



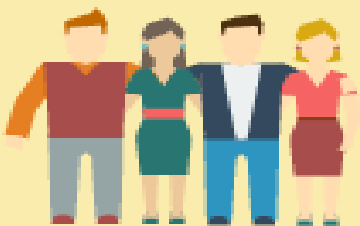
### Get off on the wrong foot

He got off on the wrong foot with my parents by breaking their favourite vase.



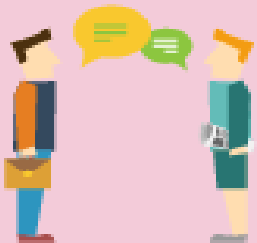
### Get on someone's nerves

He always drums his fingers on the table when you are talking to him. It really gets on my nerves.



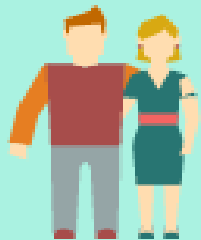
### On the rocks

He told his friend he thought their marriage was really on the rocks.



## Give someone a hard time

Mum always used to give me a hard time for not doing homework properly.



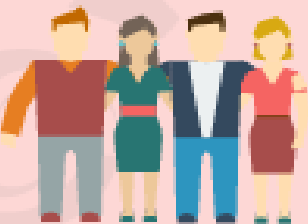
## Hit it off

When Sarah met Paulina, they hit it off immediately.



## Meet smb halfway

We agreed to meet halfway on the price.



## Treat someone like dirt

They don't appreciate the employees and treat them like dirt.



## More idiomatic expressions

- ❖ **to get on well with**: to understand someone and enjoy similar interests
- ❖ **to get to know**: to begin to know someone
- ❖ **to have a lot in common**: to share similar interests
- ❖ **to keep in touch with**: to be in contact with
- ❖ **to lose touch with**: to not see or hear from someone any longer
- ❖ **to see eye to eye**: to agree on a subject
- ❖ **Bear a striking resemblance to sb**: look very similar to sb



## Answer the questions

1. How much time do you spend with your friends?
2. Do you see friends so often?
3. What do you usually do with your friends?
4. Do you prefer spending time with your family or with your friends?
5. Is friendship important to you?
6. Tell me about your family
7. What kinds of things do you and your family often do together?
8. Who are most similar to you in your family?